

EYEVAN

2026

Spring /
Summer
Collection



Livingston (47)



PBK/S

Size: 47 □ 23-145 †38.4
Material: F: Acetate / T: Acetate
Color: EU : -
 US : -
 ASIA: PBK/S, OLB, BRH, CHGY

An updated model of "Albedo" first released in the 2024 Spring/Summer collection. Based on the 1950s French vintage, it combines a lens shape that is intermediate between Wayfarer and Crown Panto. The rim has been reconstructed with a slightly bolder silhouette, while the temple features an entirely new design. The endpieces have excellent molding precision and are combined with original decorative rivets, completed through a pressing process more than three times longer than usual.



OLB



BRH



CHGY

Original Sun
Platinum rivetsPedestal of the
hinge in a square
shape as was seen
on vintage acetate
frames

Livingston (47)-E



PBK/S

Size: 47 □ 23-145 †38.4
Material: F: Acetate / T: Acetate
Color: EU : PBK/S, OLB, BRH, CHGY
US : PBK/S, OLB, BRH, CHGY
ASIA: -

An updated model of “Albedo” first released in the 2024 Spring/Summer collection. Based on the 1950s French vintage, it combines a lens shape that is intermediate between Wayfarer and Crown Panto. The rim has been reconstructed with a slightly bolder silhouette, while the temple features an entirely new design. The endpieces have excellent molding precision and are combined with original decorative rivets, completed through a pressing process more than three times longer than usual.



OLB



BRH



CHGY

Original Sun
Platinum rivetsPedestal of the
hinge in a square
shape as was seen
on vintage acetate
frames

Allen (50)



GRH

Size: 50 □ 22-145 ‡ 36.2
Material: F: Acetate / T: Acetate
Color: EU : -
 US : -
 ASIA: PBKG, SMK, DT, GRH

The horizontally long front shape mixes elements of the rectangle shape seen in British vintage eyewear. The endpieces are finished with decorative rivets made of Sun Platinum Metal for a simple look. Combining a classic form with a street vibe is one of EYEVAN's repeated design approaches.



PBKG



SMK



DT

Original Sun
Platinum rivetsPedestal of the
hinge in a square
shape as was seen
on vintage acetate
frames

Allen (50) -E



GRH

Size: 50 □ 22-145 ‡ 36.2
 Material: F: Acetate / T: Acetate
 Color: EU : -
 US : PBKG, SMK, DT, GRH
 ASIA: -

The horizontally long front shape mixes elements of the rectangle shape seen in British vintage eyewear. The endpieces are finished with decorative rivets made of Sun Platinum Metal for a simple look. Combining a classic form with a street vibe is one of EYEVAN's repeated design approaches.



PBKG



SMK



DT



Original Sun
Platinum rivets



Pedestal of the
hinge in a square
shape as was seen
on vintage acetate
frames

Lorimer -E



PGPK

Size: 52 □ 17-145 †37.0
Material: F: Acetate / T: Acetate
Color: EU : PBK, PGPK, TORT, RGR
US : PBK, PGPK, TORT, RGR
ASIA: -

Based on a frame design originally created by the EYEVAN design team in 2012 for an American brand, this model revisits the concept with refined balance and detail. The front has been rebalanced in terms of size and hinge positioning, while the temples incorporate a newly developed design.



PBK



TORT



RGR



Original designed
temple core

Danforth (49)



CRML

Size: 49 □ 21-145 † 39.6

Material: F: Acetate, Titanium / T: β -Titanium

Color: EU : -

US : -

ASIA: PBKG, OLB, SMK, CRML

An enlarged version of the 2023 Spring/Summer model "Danforth." The Wayfarer shaped plastic rim is combined with an integrated top bar that is not soldered but pressed by a skilled craftsman while creating a clear milgrain pattern. The bridge design is taken from a three-piece frame of the 1930s, and a linear design called "speed lines" that were popular in the U.S. in the 1960s is adopted from the front to the sides, bringing together the atmosphere of vintage frames from different areas into one product from EYEVAN's perspective.



PBKG



OLB



SMK



Combined with an
integrated top bar /
Milgrain pattern

Thompson



G

Size: 47 □ 22-145 † 33.0
Material: F: Titanium / T: Titanium
Color: EU : AG, G, P, S
US : AG, G, P, S
ASIA: AG, G, P, S

A new model derived from the 2023 Spring/Summer collection's "Creston." The lens shape is inspired by the barrel-shaped combination frame created by EYEVAN's original design team in 1995 for an American brand. The design combines slightly thickened original rims with endpieces featuring decorative detailing that extends even inside the hinge by a hand-carved master mold made by a craftsman and titanium temples engraved with delicate patterns. A softly curved bridge harmonizes the overall composition, resulting in a refined and cohesive design.



AG



P



S



Voluminous 4mm
thick front rim /
Original engraving



EYEVAN's symbolic
titanium pad arm
integrated nose
pads matches

Eldridge



S

Size: 49 □ 21-145 †37.0
Material: F: Titanium / T: Titanium
Color: EU : AG, G, P, S
 US : AG, G, P, S
 ASIA: AG, G, P, S

A new model derived from the 2023 Spring/Summer collection's "Creston," distinguished by its double bridge. The front design is inspired by 1980s American vintage frame, a concept long nurtured by the EYEVAN design team. The design combines slightly thickened original rims with endpieces featuring decorative detailing that extends even inside the hinge by a hand-carved master mold made by a craftsman, and titanium temples etched with delicate patterns. A softly curved bridge is paired with a newly molded top bar, resulting in a robust yet refined design that carries a contemporary sensibility.



AG



G



P



Softly curved top
bar with integrated
nose pads



Voluminous 4mm
thick front rim /
Original engraving

Sternberg



MBK

Size: 51 □ 21-140 †41.6
Material: F: Titanium / T: β-Tita
Color: EU : AG, P, G-C, MBK
 US : AG, P, G-C, MBK
 ASIA: AG, P, G-C, MBK

The idea of combining a cut rim with a long wraparound endpiece was inspired by a vintage frame the design team encountered during their stay in New York. The endpieces employ a unique structure in which the blow hinge is embedded in the tip while being soldered to the back of the rim. Originally separate components are designed to blend within the overall minimalist style of the frame. The front features square lenses from the 2024 Autumn/Winter model “Minotaur”, creating a design that highlights the contrast between structure and form.



AG



P



G-C



Cut rim /
Wraparound
endpiece



Endpieces employ
a unique structure
in which the blow
hinge

Ludlow



G



S



Structure called
"covered endpiece"
that covers the
endpiece part by
the temple is
equipped with a
stop hinge function

Size: 55 □ 16-145 †39.3
Material: F: Titanium / T: β -Titanium
Color: EU : -
US : G, S
ASIA: -

An updated version of the 2024 Autumn/Winter model "Harve," retaining the unique structure in which the temples partially overlap the endpieces. The lens shape is sampled from the 1980s Italian metal frame, combining the distinctive FOX shape with a minimal look free of engraving on any component. This model embodies EYEVAN's contemporary interpretation of "new vintage."

E-0518



PGPKBUMB

Size: 44 □ 24-145 †37.4
 Material: F: Acetate, Titanium / T: Titanium, Acetate
 Color: EU : SMKS, PGPKBUMB, LLTYG, BGNG
 US : -
 ASIA: -

A combination frame that follows in the lineage of EYEVAN's iconic E-500 series, succeeding model E-0517. The bridge features an integrated pad arm and arch-back construction. The temples use β -titanium to provide supple elasticity, ensuring a comfortable fit. The front design is inspired by 1980s American vintage frame, a concept long nurtured by the EYEVAN design team.



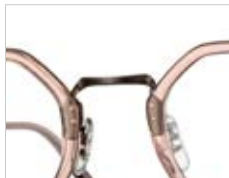
SMKS



LLTYG



BGNG



Arch-back bridge



Livingston (49)



CHGY

Size: 49 □ 23-145 †39.6
 Material: F: Acetate / T: Acetate
 Color: EU : -
 US : -
 ASIA: PBKS, TORT, SMK, CHGY

An updated model of "Albedo" first released in the 2024 Spring/Summer collection. Based on the 1950s French vintage, it combines a lens shape that is intermediate between Wayfarer and Crown Panto. The rim has been reconstructed with a slightly bolder silhouette, while the temple features an entirely new design. The endpieces have excellent molding precision and are combined with original decorative rivets, completed through a pressing process more than three times longer than usual.



PBKS



TORT



SMK

Original Sun
Platinum rivetsPedestal of the
hinge in a square
shape as was seen
on vintage acetate
framesOriginal CR39 4-
curve lenses are
used for sunglass
lenses

Livingston (49)-E



CHGY

Size: 49 □ 23-145 †39.6
Material: F: Acetate / T: Acetate
Color: EU : PBKS, TORT, SMK, CHGY
 US : PBKS, TORT, SMK, CHGY
 ASIA: -

An updated model of "Albedo" first released in the 2024 Spring/Summer collection. Based on the 1950s French vintage, it combines a lens shape that is intermediate between Wayfarer and Crown Panto. The rim has been reconstructed with a slightly bolder silhouette, while the temple features an entirely new design. The endpieces have excellent molding precision and are combined with original decorative rivets, completed through a pressing process more than three times longer than usual.



PBKS



TORT



SMK

Original Sun
Platinum rivetsPedestal of the
hinge in a square
shape as was seen
on vintage acetate
framesOriginal CR39 4-
curve lenses are
used for sunglass
lenses

Allen (52) -E



BGN

Size: 52 □ 22-145 †37.5
Material: F: Acetate / T: Acetate
Color: EU : -
 US : PBKG, MPBK, SLGRY, BGN
 ASIA: -

The horizontally long front shape mixes elements of the rectangle shape seen in British vintage eyewear. The endpieces are finished with decorative rivets made of Sun Platinum Metal for a simple look. Combining a classic form with a street vibe is one of EYEVAN's repeated design approaches. Original CR39 4 - curve lenses are used for sunglass lenses.



PBKG



MPBK



SLGRY



Original Sun
Platinum rivets



Pedestal of the
hinge in a square
shape as was seen
on vintage acetate
frames



Original CR39 4-
curve lenses are
used for sunglass
lenses

Nassau



MYT

Size: 52 □ 21-145 † 44.2
 Material: F: Acetate / T: Acetate
 Color: EU : -
 US : -
 ASIA: PBKG, MYT, BGN, ECR

A new model introducing a refreshed shape to the top bar design carried over from the 2025 Autumn/Winter model "Zen." While retaining the stepped-cut bridge, the lenses are selected from the design team's past stock, featuring a horizontally long Panto shape. The bridge's protrusion has been reduced to match the strong front curve, creating a sense of unity throughout the entire frame. This construction represents the culmination of the style lineage from "Brett" to "Zen." Original CR39 4 - curve lenses are used for sunglass lenses.



PBKG



BGN



ECR

Stepped cut design
on the bridgeOriginal Sun
Platinum rivetsOriginal CR39 4-
curve lenses are
used for sunglass
lenses

Nassau-E



MYT

Size: 52 □ 21-145 † 44.2
Material: F: Acetate / T: Acetate
Color: EU : PBKG, MYT, BGN, ECR
 US : PBKG, MYT, BGN, ECR
 ASIA: -

A new model introducing a refreshed shape to the top bar design carried over from the 2025 Autumn/Winter model "Zen." While retaining the stepped-cut bridge, the lenses are selected from the design team's past stock, featuring a horizontally long Panto shape. The bridge's protrusion has been reduced to match the strong front curve, creating a sense of unity throughout the entire frame. This construction represents the culmination of the style lineage from "Brett" to "Zen." Original CR39 4 - curve lenses are used for sunglass lenses.



PBKG



BGN



ECR

Stepped cut design
on the bridgeOriginal Sun
Platinum rivetsOriginal CR39 4-
curve lenses are
used for sunglass
lenses

Ten Eyck



ECRS

Size: 52 □ 23-145 †35.4

Material: F: Acetate, Titanium / T: Titanium, Acetate

Color: EU : -

US : -

ASIA: ECRS, MPBKBK, PGPKBUMB, SMKG

Named after a small park in Brooklyn, this model features a distinctive name and draws inspiration from a 1950s frame sketch illustrated in the 1972 book "FASHION IN EYE-GLASSES." By layering the image of early 2000s fashion frames over this distinctive lens shape, EYEVAN has reimagined it within its combination frame category. Original CR39 2-curve lenses are used for sunglass lenses.



MPBKBK



PGPKBUMB



SMKG



Original manray
bridge



Original CR39 2-
curve lenses are
used for sunglass
lenses

Thompson



BG

Size: 47 □ 22-145 † 33.0
Material: F: Titanium / T: Titanium
Color: EU : BG, MBK, S, YG
 US : BG, MBK, S, YG
 ASIA: -

A new model derived from the 2023 Spring/Summer collection's "Creston." The lens shape is inspired by the barrel-shaped combination frame created by EYEVAN's original design team in 1995 for an American brand. The design combines slightly thickened original rims with endpieces featuring decorative detailing that extends even inside the hinge by a hand-carved master mold made by a craftsman and titanium temples engraved with delicate patterns. A softly curved bridge harmonizes the overall composition, resulting in a refined and cohesive design. Original CR39 2- curve lenses are used for sunglass lenses.



MBK



S



YG



Voluminous 4mm
thick front rim /
Original engraving



EYEVAN's symbolic
titanium pad arm
integrated nose
pads matches



Original CR39 2-
curve lenses are
used for sunglass
lenses

Eldridge



BG

Size: 49 □ 21-145 †37.0
Material: F: Titanium / T: Titanium
Color: EU : BG, MBK, S, YG
 US : BG, MBK, S, YG
 ASIA: BG, MBK, S, YG

A new model derived from the 2023 Spring/Summer collection's "Creston," distinguished by its double bridge. The front design is inspired by 1980s American vintage frame, a concept long nurtured by the EYEVAN design team. The design combines slightly thickened original rims with endpieces featuring decorative detailing that extends even inside the hinge by a hand-carved master mold made by a craftsman, and titanium temples etched with delicate patterns. A softly curved bridge is paired with a newly molded top bar, resulting in a robust yet refined design that carries a contemporary sensibility. Original CR39 2- curve lenses are used for sunglass lenses.



MBK



S



YG



Softly curved top
bar with integrated
nose pads



Voluminous 4mm
thick front rim /
original engraving

Sternberg W



BG

Size: 51 □ 21-140 †41.6
Material: F: Titanium / T: β -titanium
Color: EU : BG, G, MBK, S
 US : -
 ASIA: -

A double-bridge version of the "Sternberg" model. The idea of combining a cut rim with a long wraparound endpiece was inspired by vintage frames the design team encountered during their stay in New York. The endpieces employ a unique structure in which the blow hinge is embedded in the tip while being soldered to the back of the rim. Originally separate components are designed to blend within the overall minimalist style of the frame. The top bar design is sampled from the sunglasses worn by David Bowie in a 1970s film in which he starred, combined with the lens shape of the 2024 Autumn/Winter model "Minotaur." Original CR39 4- curve lenses are used for sunglass lenses.



G



MBK



S



Cut rim /
Wraparound
endpiece



Endpieces employ
a unique structure
in which the blow
hinge

Ludlow



BC

Size: 55 □ 16-145 †39.3
Material: F: Titanium / T: β -Titanium
Color: EU : BC, BG, MBK, YG
US : BC, BG, MBK, YG
ASIA: -

An updated version of the 2024 Autumn/Winter model "Harve," retaining the unique structure in which the temples partially overlap the endpieces. The lens shape is sampled from the 1980s Italian metal frame, combining the distinctive FOX shape with a minimal look free of engraving on any component. This model embodies EYEVAN's contemporary interpretation of "new vintage." Original CR39 2- curve lenses are used for sunglass lenses.



BG



MBK



YG



Structure called
"covered endpiece"
that covers the
endpiece part by
the temple is
equipped with a
stop hinge function



ICONIC MODELS

Byron (47)-E



ECR

Size: 47 □ 22-145
Material: F: Acetate / T: Acetate
Color: ECR, PBK, TORT2, WNG



PBK



TORT2



WNG

Conner-E



ECR

Size: 46 □ 23-145
Material: F: Acetate / T: Acetate
Color: ECR, MPBKYT, PBK, SMK, TORT2, YTMPBK



MPBKYT



PBK



SMK



TORT2

Lubin-E



CRL

Size: 48 □ 21-145
Material: F: Acetate / T: Acetate
Color: AQBL, CRL, DBE, FRTT, LLT, MOR, MPBK, OD, PBK, SMK, TORT



AQBL



DBE



FRTT



LLT



MOR



MPBK



OD



PBK



SMK



TORT

Mason-E2



LLT

Size: 46 □ 23-145
Material: F: Acetate / T: Acetate
Color: LLT, MOR, MPBK, PBK, SMK, TORT, YT



MOR



MPBK



PBK



SMK



TORT



YT

Orbit (44)



AG

Size: 44 □ 22-145
Material: F: Titanium / T: Titanium
Color: AG, G, P, S



G



P



S

Puerto (45)-E2



MNB

Size: 45 □ 22-145
Material: F: Acetate / T: Acetate
Color: BBR, DST, MNB, PBK, SMK, TORT



BBR



DST



PBK



SMK



TORT

Puerto (47)-E2



BBR

Size: 47 □ 22-145
Material: F: Acetate / T: Acetate
Color: BBR, DST, DT, MNB, PBK, SMK



DST



DT



MNB



PBK



SMK

Ramsey(45)-E



PBK

Size: 45 □ 22-145
Material: F: Acetate / T: Acetate
Color: PBK, TORT, WLT, WNG



TORT



WLT



WNG

Sadler SUN-E2



TORT

Size: 47 □ 23-145
Material: F: Acetate / T: Acetate
Color: BGN, ORS, PBK, RGR, TORT, WNG



BGN



ORS



PBK



RGR



WNG

Safari-E



AG

Size: 46 □ 21-145
Material: F: Titanium / T: Titanium
Color: AG, G, P, S



G



P



S

Stag (45)-E



IDG

Size: 45 □ 22-145
Material: F: Acetate / T: Acetate
Color: IDG, RGR, TORT, VDG



RGR



TORT



VDG

Stag (47)-E



IDG

Size: 47 □ 22-145
Material: F: Acetate / T: Acetate
Color: IDG, RGR, TORT, VDG



RGR



TORT



VDG

26SS Image option

Campaign Images

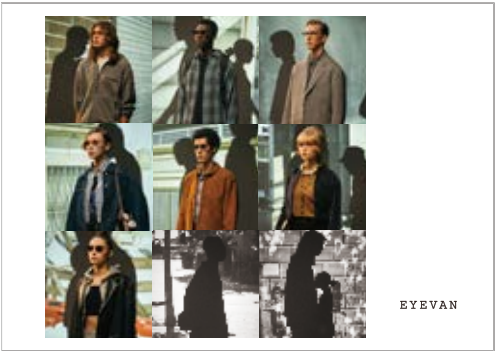
How To Request the Campaign Images:

- _ Contact your sales representative about using campaign images.
 - _ Select your preferred image option from the list on the right.
- * Apply your request at least two weeks prior to your requested delivery date.

Points To Note Regarding Application:

- _ Let us know how long the artwork will be used and where it will be displayed.
 - _ Select a vertical image for vertical media and a horizontal image for horizontal media.
 - _ Describe the intended use, desired size and data format. (e.g., poster in a store / size: A1 vertical / ai format)
 - _ Send some photos of the artwork after installation to the sales representative.
- * In case of web or SNS, please let us know the URL.

key visual



Option A-H

1	2	3
4	5	6
7	-	-

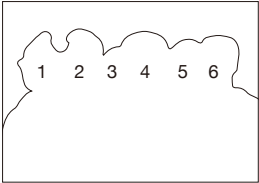
1. Sternberg W / c.BC(SG)
2. Banker / c.PBKG(SG)
3. Allen / c.GRH
4. Thompson / c.BC(SG)
5. Eldridge / c.S(SG)
6. E-0518 / c.PGPK
7. Ludlow / c.MBK



Option A-V



Option B-H



1. Ludlow / c.MBK
2. Allen / c.GRH
3. Thompson / c.BC(SG)
4. Eldridge / c.S(SG)
5. E-0518 / c.PGPK
6. Banker / c.PBKG(SG)



Option B-V

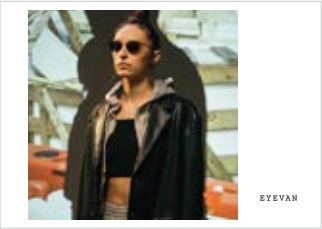
other visual



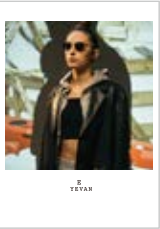
Option G-H
Eldridge / c.S(SG)



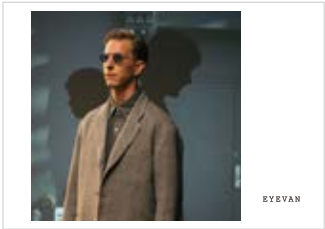
Option G-V



Option I-H
Ludlow / c.MBK



Option I-V



Option L-H
Safari / c.P-BK



Option L-V



Option M-H
DD-14Y / c.TORT2



Option M-V

iconic visual



Option O
Brett-E



Option P
Brett-E



Option Q
Brett-E



Option R
Puerto SUN-E



Option S
Gentry-E SUN



Option T
Brooks SUN



Option U
Brooks,
Brooks SUN

SNS

Instagram

https://www.instagram.com/eyevan_official/

Account name | eyevan_official

Followers | 108,000 people ※2025 of September

In Stories, we also introduce press information, campaign movies, and handicrafts by craftsmen in Sabae City. We post daily inspirational images for EYEVAN, EYEVAN 7285, 10 eyevan, E5 eyevan products, season visuals and collections on Instagram.

In Stories, we also introduce press information, campaign movies, and handicrafts by craftsmen in Sabae City.



You can access the EYEVAN Official Instagram page by scanning the QR code.



Press

Advertisement and Celebrities

CanCam



Oggi



Ray



WWD JAPAN



LEON



men's FUSGE



2nd



Marketing materials

How to use box

1



Please access:

<https://eyevan.box.com/s/lkc10ya9mpuao03pueh0cg0bhkyad0bo>

2



Please click on the name of each brand.

3



You can view and download the following contents.

CAMPAIGN IMAGE
CATALOG
LOGO
MOVIE
PRODUCT IMAGES

Identity of EYEVAN

“Wear an Original Perspective”

EYEVAN has created new values in eyewear throughout its history.

Developing its reliable, quality Japanese craftsmanship and sophisticated design over the years, EYEVAN has pushed new boundaries of fashion eyewear.

Today, EYEVAN proposes the brand concept “Wear an Original Perspective”

—to select eyewear of your choice, to wear your original perspective amid this chaotic world.

We look back at the past 50 years from where we are today to what's next on the journey in the exploration of EYEVAN's identity.

EYEVAN



IO eyevan

Eyevol

E5 eyevan